

# 21<sup>ST</sup> CENTURY LIBRARY MEDIA CENTERS



Jennifer Stoever, Assistant Superintendent for Teaching and Learning  
Amy Bendall, District Library Media Specialist

June 16, 2015

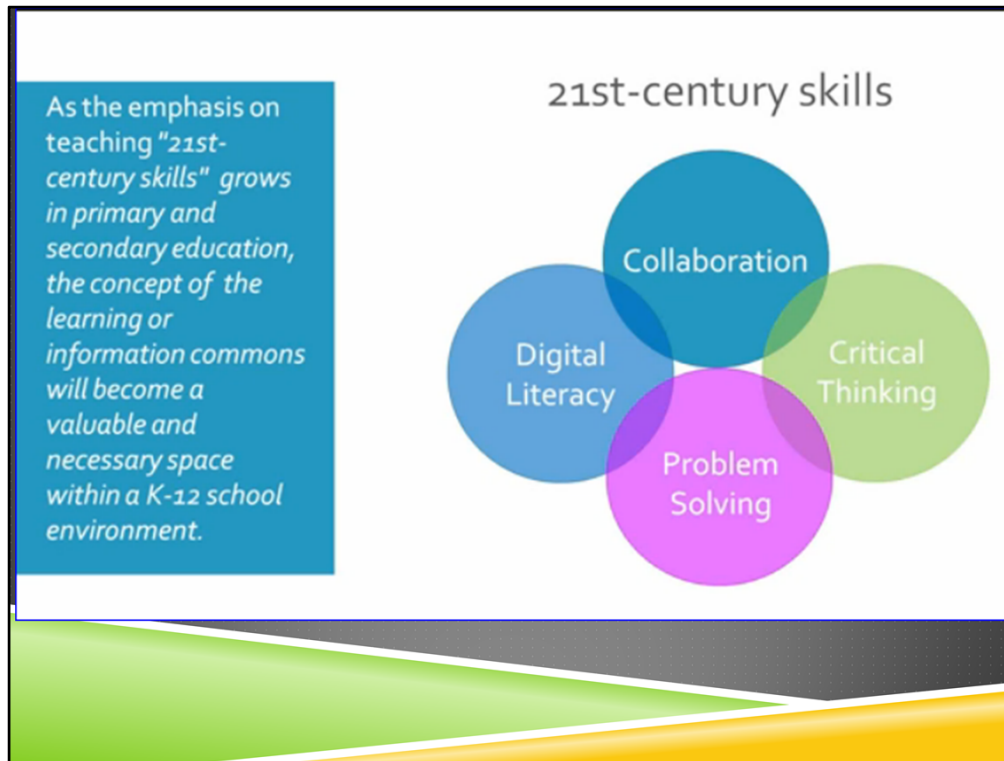
Good Evening, Tonight I am here with Amy Bendall the District Library Media Specialist and we will be presenting on one of the 2015-16 program changes. In the 2015-2016 school year, Antioch School District 34 will implement a new delivery model for our library media centers. The goal is to implement a consistent K-8 Library/Media Structure for a 21<sup>st</sup> Century learning community. The decision to implement this model was based on our analysis of several school library impact studies that helped us imagine ways we could reinvent our current facility to foster a community of learning and literacy, while supporting high academic achievement, independent reading and learning, and collaboration throughout the school.

# STRATEGIC PLAN ALIGNMENT

- ▶ Goal 2: Learning Environment
  - ▶ Implement a safe, supportive, and challenging learning environment that promotes the physical, academic, social, and emotional growth of each student.



Goal 2 of our newly adopted strategic plan speaks to safe, supportive and challenging learning environments that promote physical, academic, social and emotional growth for each students. Our desired future state of the library media centers will strive toward that aim.



As the emphasis on teaching "21<sup>st</sup> century skills" grows, the concept of the learning and information commons will become a valuable and necessary space within our schools. When we think of 21<sup>st</sup> Century skills, we think of core competencies like: collaboration, digital literacy, critical thinking and problem solving. School advocates believe that schools need to be teaching these skills to be successful in today's world. In addition to the Common Core State Standards that IL has adopted, the American Association School Libraries has 21st century learner standards. All of these standards focus on interaction and connecting with literature.



The purpose of this Learning Commons space is really no different from the original purpose of a traditional library. It is still a shared learning space but we have redefined the “learning resources”. The traditional library was focused on guaranteeing access to knowledge for all. Even though we are using different kinds of resources to access this knowledge today, we are still doing the same thing. We need to teach and provide opportunities for learning and shaping literacy and education and shape those new ideas and perspectives that are central for the creative and innovative society of today. These resources include electronic resources, hardware and software, as well as online publications and databases which we currently have in our libraries. And of course, the learning commons will continue to use print resources like books, magazines and newspapers. A new resource is the manipulative resources. These are games, items and tools that foster imaginative play. 3D Printers, Green Screens, and Legos are all examples. Human Resource are coming in to play in a new way then in the past. There is a lot more about sharing and connecting with others. As more and more information is available online, we need a physical space to come together to interact with one another to learn, work and grow together in this high tech-high touch world.





The learning commons is:

More than a combination library and computer lab

The learning commons is:

- A full-service learning, research, and project space.

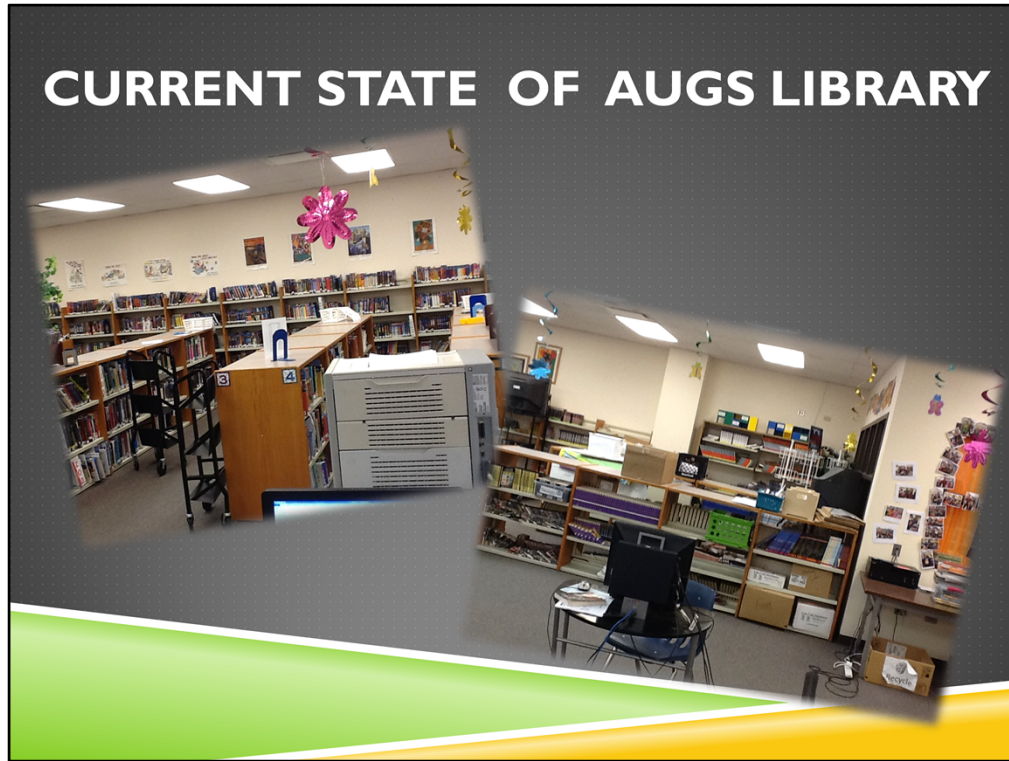
Traditionally, this space was a “Just In Case” model. Many times it is a combination library and computer lab. You’ll see rows of shelves to house the book collection, a large circulation desk for checking out books and book care needs, a classroom setup for students for class instruction or to accommodate large groups for meetings, and banks of computers or a traditional computer lab. These spaces were needed to support the traditional functions of the library that were used only for scheduled classroom visits during the school day.

As we move toward our desired state, this space should evolve into a full service learning, research and project space –multifunctional in nature. You’ll see less rows of books as digital materials become readily accessible. You’ll see shelving that is lower in height and merchandised as opposed to warehoused. You’ll see genre neighborhoods where fiction and non-fiction materials are housed together. The space becomes the asset. The space becomes a flexible environment – accommodating multiple learning activities that can change within the day – these environments can be reconfigured easily with tables and chairs on wheels and tables that collapse to create different zones for learning. Students are encouraged to use the space beyond the normal school day – not just during a scheduled class period. More of “A Just in Time” Model.

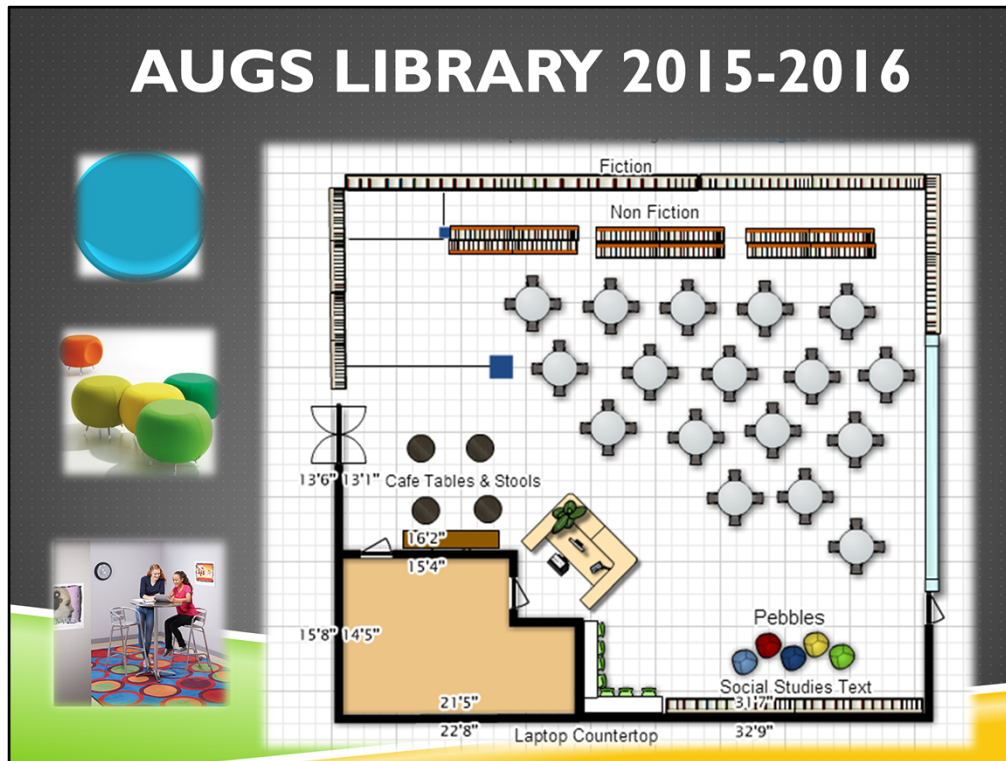
## WHAT'S IN STORE FOR D34 THIS YEAR?



What's in store for d34 this summer? Creating new spaces with paint and color to create inviting spaces for our staff and students. This summer we will reconfigure the space, add new shelving and circulation desks to some of our libraries. We will also add soft seating, new reading areas, new technology spaces and Promethean boards to extend learning into these spaces.



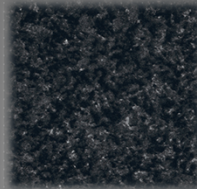
AUGS currently has empty spaces that are filled with tables. It lacks character and it has a very sterile feel that is uninviting. There is a cluster of eight computers in the center of the library, shelves are too close together, and the library is currently used as the textbook warehouse. The library collections are not easily assessable to students as multiple students can not be in the same area looking at titles.



AUGS will see a new shelving configuration that will eventually lead to genre neighborhoods (ie Genrifed sections similar to a bookstore – no more “I want a mystery” there will be a mystery section. There may also be information neighborhoods where both fiction and non-fiction books on the Civil War will be grouped together). We will add paint, soft seating, café tables and chairs, signage, artwork and a laptop workspace!

# LAPTOP WORKSPACE FOR AUGS

## ► Inspiration Wall and Chairs



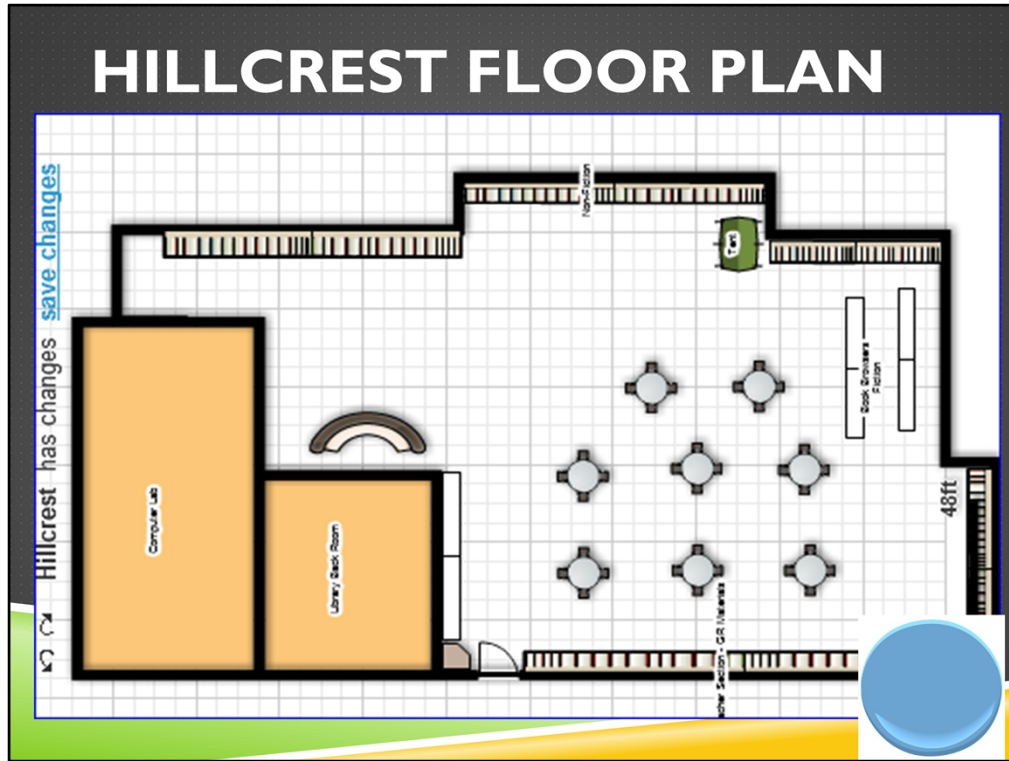
The laptop workspace will look similar to above.



## CURRENT STATE OF HILLCREST LIBRARY



Currently the Hillcrest Library does not have developmentally appropriate shelving for PreK, Kdg, 1<sup>st</sup> grade students – students want to look at book covers not the spine labels. When you first enter the Hillcrest Library you enter into all teacher materials and then move your way to the student collection.



Hillcrest will see a new layout that will put the focus on the K-1 student. The non-fiction section and the teachers guided reading section will flip flop so that the books will now be in the front of the library. We will also add paint, a child friendly reading space, signage, and new book browsers.



# THE FUTURE STATE

## Fiction

## Book Browsers and Displays



These book browsers are developmentally appropriate for the kindergarten and 1<sup>st</sup> grade students. Students at this age find the traditional shelving method (spine out) difficult to read. Students do “judge a book by its cover” so these book browsers will allow them to flip through the books cover out; similar to how we used to flip through records at a record store. Remember that?

# THE FUTURE STATE

## Picture Book Area



## Soft Seating Pebbles



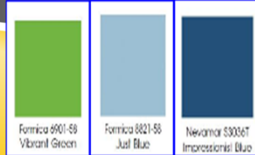
What's on order for our 2-5 buildings? Each building will receive a new picture book area (continuation from Hillcrest with mini-book browsers and soft seating) and 3 Pebble Soft Seating Areas to add color and excitement to the space.

# MORE....

**New Circulation Desk with  
Book Drop @ AES & WCP**



Laminate Colors



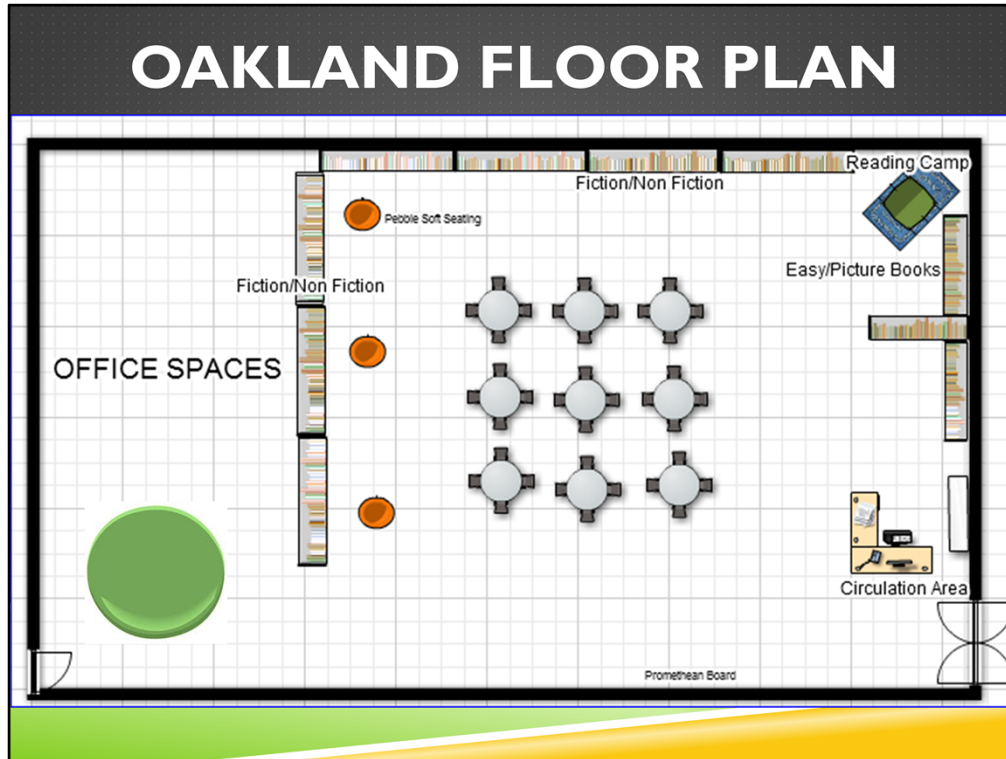
**Colorful Chairs  
on Castors**



They will also all get new colorful chairs on castors and a soft carpet area for sitting. AES and WCP will also receive new circulation desks. OAK will receive new tables in lieu of the circulation desk.

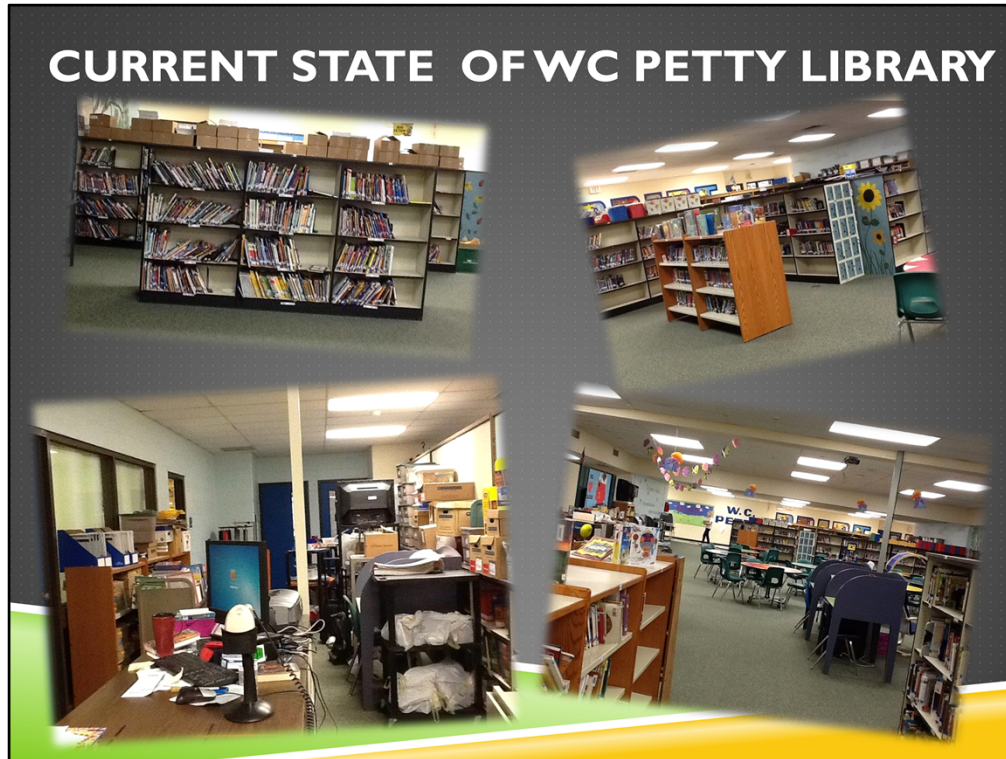


The Oakland library is currently very Brown which makes it uninviting. It is an assortment of shelves that are different sizes and shapes. The library space is “squished” because the majority of the library is used as office spaces (over half of the library). The Oakland library needs to go through the deselection process (or weeding) any book that has not been checked out in the past five years should be removed (the recommendation from the American Library Association is 3 years). This has not been done to the Oakland library in the past ten years. By running a report using our Follet Destiny Library software the Oakland Library collection has 32,423 books (this includes all textbooks and materials catalogued into the software program) with the average age of the collection being from the year 2000 (which is a decade behind). There are at least 1,554 Non-fiction books out of 1,903 that are out dated (meaning they are past the acceptable age use). When reviewing the Data Integrity for Oakland over 58% of the collection is not cataloged correctly.



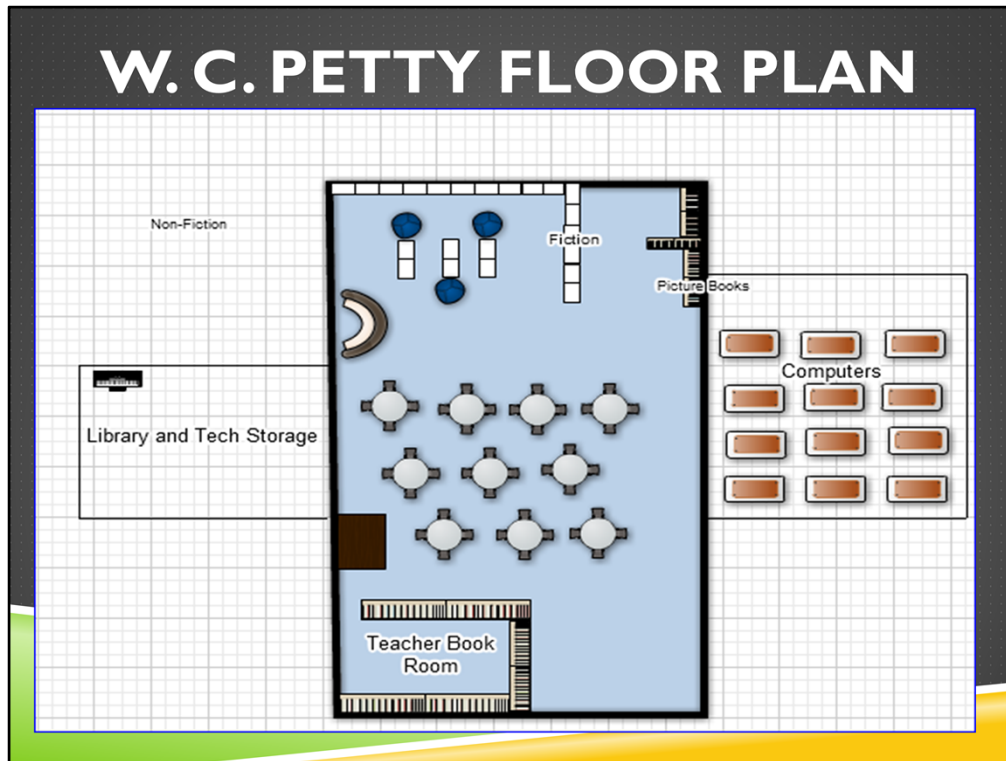
Oakland Floor Plan Inspiration. By moving the library shelving back 4 feet, we will gain some much needed space. New tables will offer the ability to create the multifunctional space that I talked about earlier.





The W.C. Petty library is a huge wall-less space. The library has become a storage space for materials that outdated, not in use, and just needing storage. Example, laminating, backpacks, book room materials, empty boxes, etc. The dedicated library storage area has had to be reallocated to teachers for offices or small group work with students.

The average age of the W.C. Petty library is from 2001. There are at least 500 titles with older copywrite that may contain outdated or inaccurate information. For example, 98% or our books on space are outdated (107 books out of 109 are outdated). The Petty library has 109 books that are considered in the topics of Biology an Life Sciences but 100 of these books are out dated.



WCP Floor Plan Inspiration





The AES library has books on the shelves that are copyright 1960 and that have not been checked out for over 49 years. The average age of the AES library is 1998.

There are 95 titles in the library that are copyright 1950

There are 36 titles copyright from 1940

There are 11,841 titles from 1999 or before meaning 41% of the library collection is from the last century.

The AES library space currently in different zones, the computer lab, book room, library collection, and then tables for seating. There is no storage in the library causing anything that needs to be stored to sit out in the library. The AES library is all shelves so there is no space for students to read and enjoy the library collection. The AES library is mainly cluttered with teacher materials not materials for students.

As offices had to be moved into the library the space for the library collection continually became smaller and smaller.



AES Floor Plan Inspiration

# VISION

*Educating and inspiring students to reach their full potential in an ever-changing world.*

- ▶ In our Learning Centers we strive to make our library a welcoming place where students can learn, explore, and have fun! Our goals include:
  - \* to foster the love of reading
  - \* to encourage the pursuit of personal interests through reading
  - \* to support student achievement of curricular goals and objectives
  - \* to support teachers in their delivery of curriculum
  - \* to empower students to become discriminating users of information
  - \* to provide up-to-date resources in a variety of formats
  - \* to promote academic excellence and instill academic integrity

# THE PLAN

- ▶ Phase 1
  - ▶ Reconfigure Spaces to make them Open and Inviting
- ▶ Phase 2
  - ▶ Increase Technology in Learning Centers
  - ▶ All Materials will be updated and catalogued correctly
- ▶ Phase 3
  - ▶ Evaluate the new library/media center model and determine next steps and adjustments to the model

# HOW? QUESTIONS?

- ▶ We start tomorrow!

